

Data sheet: Yonos MAXO 25/0,5-7

Hydraulic data

Max. volume flow Q	8.2 m ³ /h
Max. delivery head H	7.00 m
Energy efficiency index (EEI)	0.20

Motor data

Mains connection	1~230 V \pm 10%, 50/60 Hz
Power consumption $P_{1 \max}$	120 W
Power consumption $P_{1 \min}$	5 W
Max current I_{\max}	1.00 A
Min current I_{\min}	0.08 A
Max. speed n_{\max}	3700 rpm
Min. speed n_{\min}	1000 rpm
Insulation class	F
Protection class	IPX4D
Emitted interference	EN 61800-3;2004+A1;2012 /residential area (C1)
Interference resistance	EN 61800-3;2004+A1;2012 /industria l environment (C2)

Materials

Bearing	Carbon, metal impregnated
Impeller	PPE/PS-GF30
Pump housing	5.1300, EN-GJL-200
Shaft	1.4122, X39CrMo17-1

Product data

Maximum operating pressure PN	10 bar
Max. ambient temperature T	40 °C
Min. ambient temperature T	-20 °C
Max. fluid temperature T	110 °C
Min. fluid temperature T	-10 °C

Installation dimensions

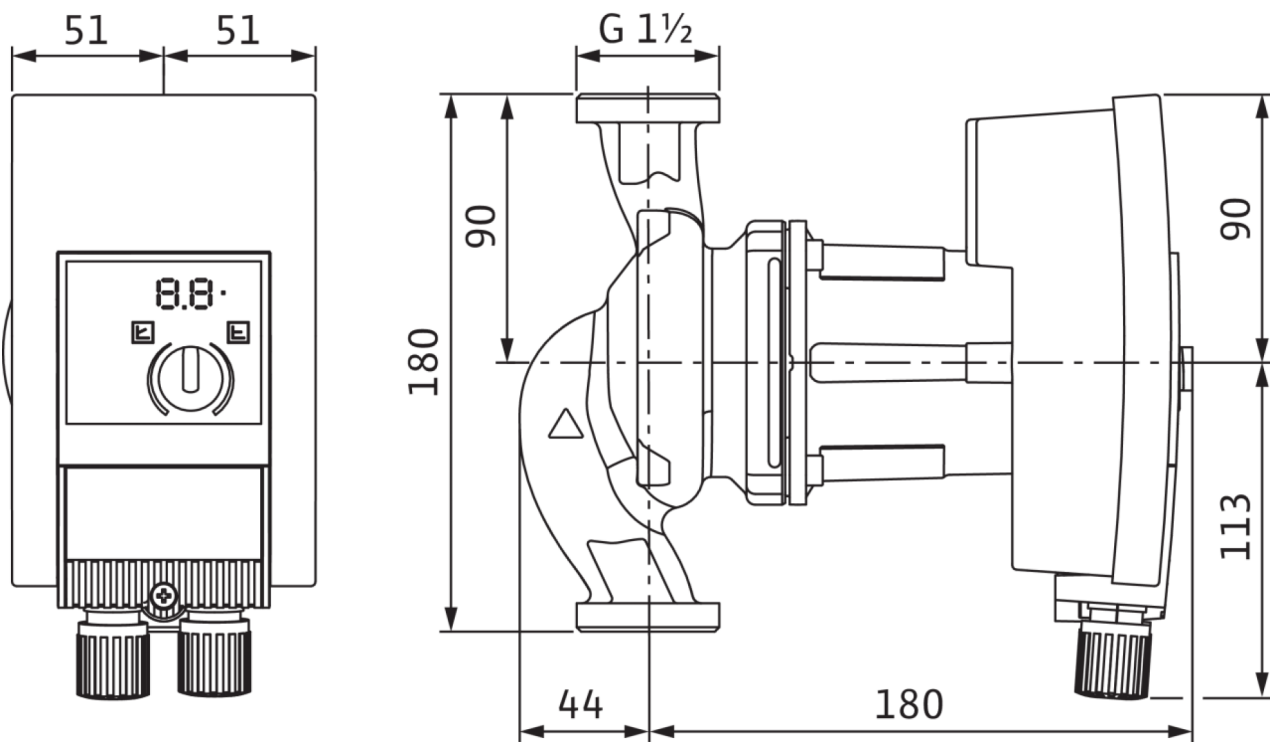
Pipe connection on the pressure side	G 1½
Pipe connection on the suction side	G 1½
Port-to-port length l_0	180 mm

Information for order placements

Brand	Wilo
Product description	Yonos MAXO 25/0,5-7
Article number	2120639
Net weight, approx. m	5 kg

Dimensions and dimensions drawings: Yonos MAXO 25/0,5-7

Yonos MAXO 25/0,5-7



Pump curves: Yonos MAXO 25/0,5-7

Yonos MAXO 25/0,5-7

